



**Why Choose us
for your next project?**

- **Quality Trusses**
- **Superior Service**
- **Reliable Delivery**
- **Installation Available**

Quality Trusses - TrusSteel is the most accepted, most specified cold-formed steel (CFS) truss system on the market today. No other building component combines strength, stiffness, fire resistance, insect resistance and design flexibility so well.

Superior Service - Our highly qualified team of staff and employees has over 75 years of combined cold-formed steel truss design, production and customer service experience. We also offer structural engineering services through Alpine Structural Consultants to provide fully engineered temporary and permanent truss bracing systems.

Reliable Delivery - We know how important it is for you to receive your trusses when they are promised.

Installation Available - Installation services are available anywhere in the United States and are provided by highly experienced and fully-insured truss installers.

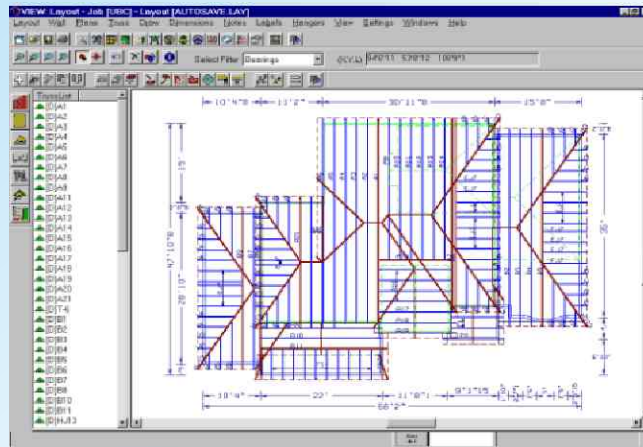


Division of Alpine Engineered Products, Inc.

Alpine's TrusSteel® Components And steelVIEW™ Layout, Design, and Engineering Software

**The Most Trusted Names In The
Cold Formed Steel Truss Industry!**

All Tri-State trusses are engineered trusses, designed using Alpine's steelVIEW™ software. This powerful, proprietary software delivers unrivaled accuracy in 3D modeling and truss layout, truss engineering and bidding.



TrusSteel trusses, built with unique, patented members and Double Shear™ fasteners, are pound-for-pound the strongest, stiffest light gauge CFS trusses on the market. Stiff trusses handle easier and require less bracing.

From Design...



...To Delivery

877-STL-TRUS (785-8787)



www.tristatecfs.com

MBE and DBE Certified

140 Arnold Drive, Suite 1 • Shepherdsville, KY 40165

- **Design**
- **Engineering**
- **Quality Products**
- **Quality Service**
- **Competitive Pricing**
- **Fast Bidding Information**
- **Engineering Support**



**Call for a quote
on your next project:**

877-STL-TRUS (785-8787)

502-957-1234

Tri-State



Cold-Formed Steel
Components, Inc.

140 Arnold Drive, Suite 1 • Shepherdsville, KY 40165

Tri-State

**Cold-Formed Steel
Components, Inc.**

- *Quality Trusses*
- *Superior Service*
- *Reliable Delivery*
- *Installation Available*

**Call us on your next
Cold-Formed
Steel Truss Project!**



140 Arnold Drive, Suite 1
Shepherdsville, KY 40165
502-957-1234
877-STL-TRUS (785-8787)